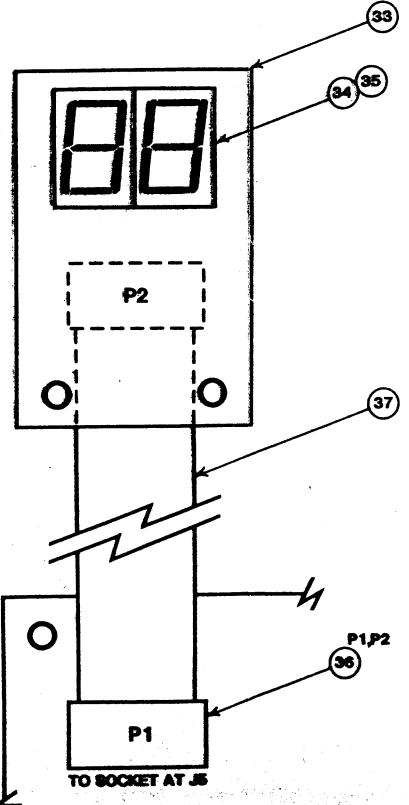
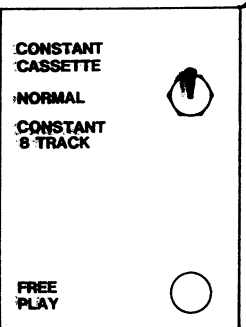
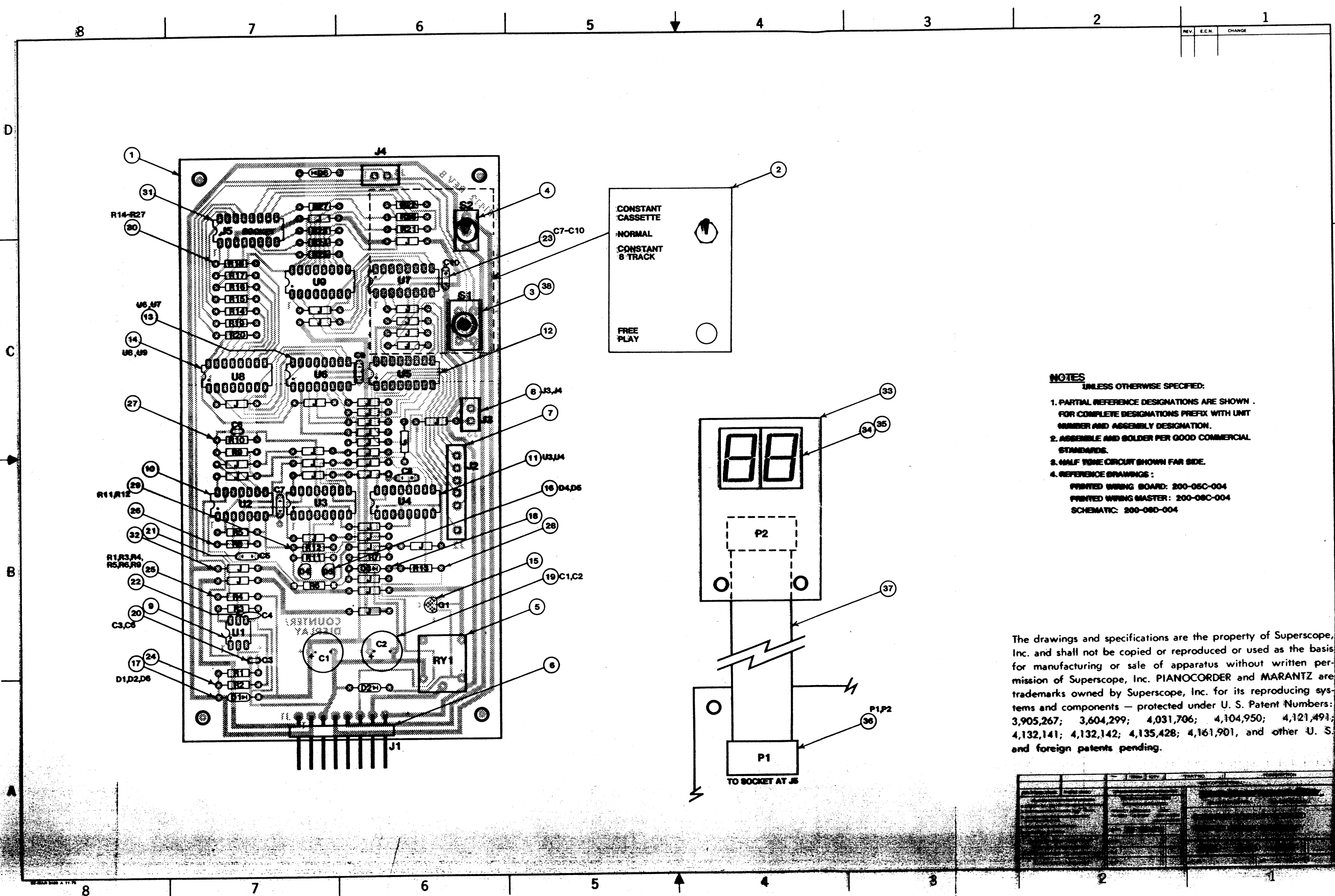


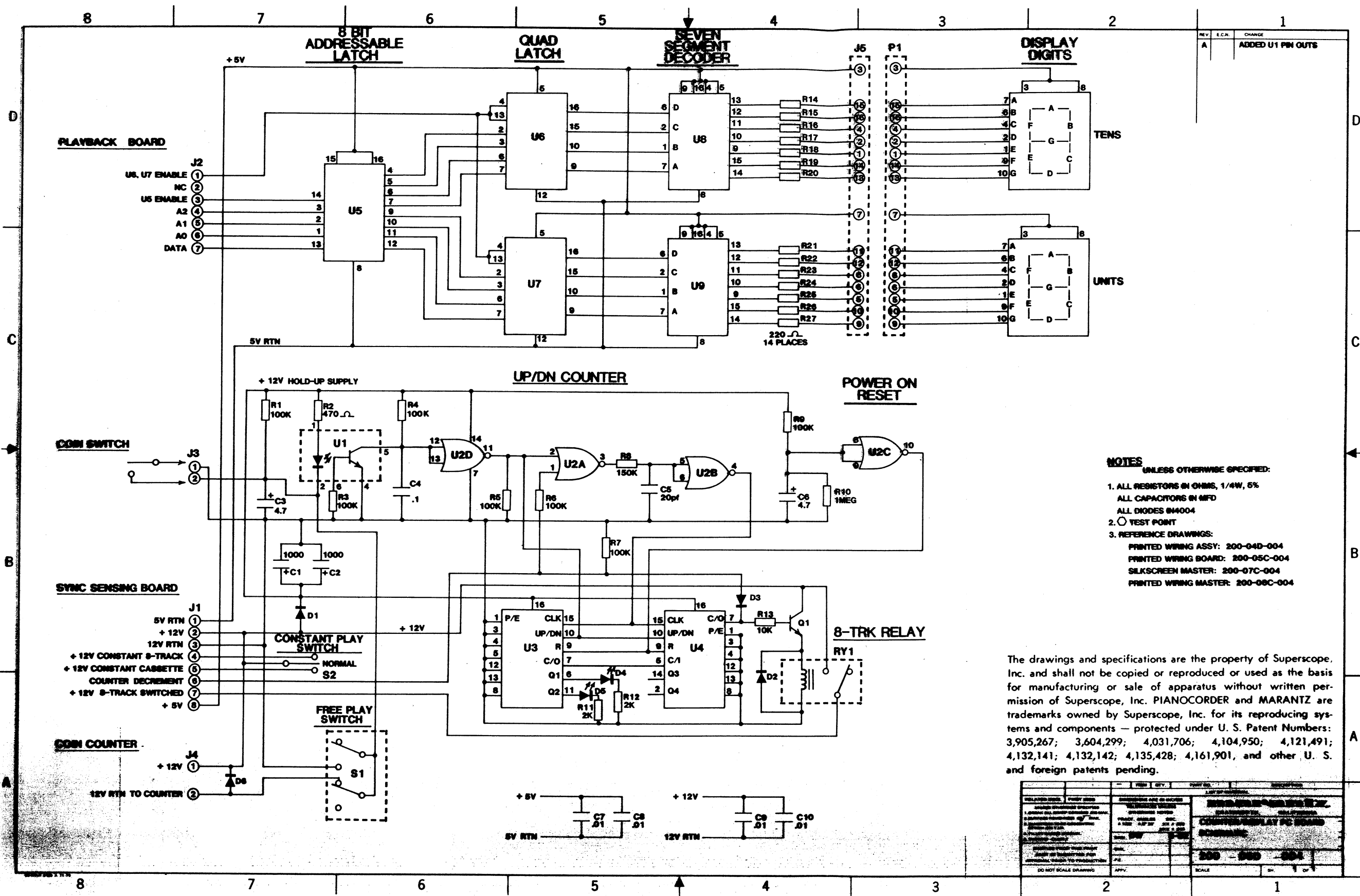
REV.	DATE	BY	CHK.	APPV.	DESCRIPTION
1					NET REVISION
RELATED CODE FIRST USED DIMENSIONS ARE IN INCHES UNLESS OTHERWISE SPECIFIED TOLERANCES UNLESS OTHERWISE NOTED 1 BREAK ALL SHARP CORNERS 2X MAX. FRACT. ANGLES DEC 2 SURFACE FINISHES 125/ MAX. 4 1/20 1/8 20 2X 1 20 3 DIAMETERS TO BE CONCENTRIC WITHIN .002 T.I.A. 3X 1 20 4 FLEET RADII 2X MAX. 3X 1 20 5 THREADS - CLASS 2 DIM DW 3-82 CHK. P.E. DO NOT SCALE DRAWING APPV. SCALE 1" = 1"					
<b>COM-OP PARADES INTERCONNECTING WIRING DIAGRAM</b> 200 - 060 - 073					



- NOTES**  
UNLESS OTHERWISE SPECIFIED:
- PARTIAL REFERENCE DESIGNATIONS ARE SHOWN FOR COMPLETE DESIGNATIONS PREFIX WITH UNIT NUMBER AND ASSEMBLY DESIGNATION.
  - ASSEMBLE AND SOLDER PER GOOD COMMERCIAL STANDARDS.
  - HALF VOLUME CIRCUIT SHOWN FAR SIDE.
  - REFERENCE DRAWINGS:  
PRINTED WIRING BOARD: 200-08C-004  
PRINTED WIRING MASTER: 200-08C-004  
SCHEMATIC: 200-08D-004

The drawings and specifications are the property of Superscope, Inc. and shall not be copied or reproduced or used as the basis for manufacturing or sale of apparatus without written permission of Superscope, Inc. PIANOCORDER and MARANTZ are trademarks owned by Superscope, Inc. for its reproducing systems and components — protected under U. S. Patent Numbers: 3,905,267; 3,604,299; 4,031,706; 4,104,950; 4,121,491; 4,132,141; 4,132,142; 4,135,428; 4,161,901, and other U. S. and foreign patents pending.

REV	E.C.N.	CHANGE



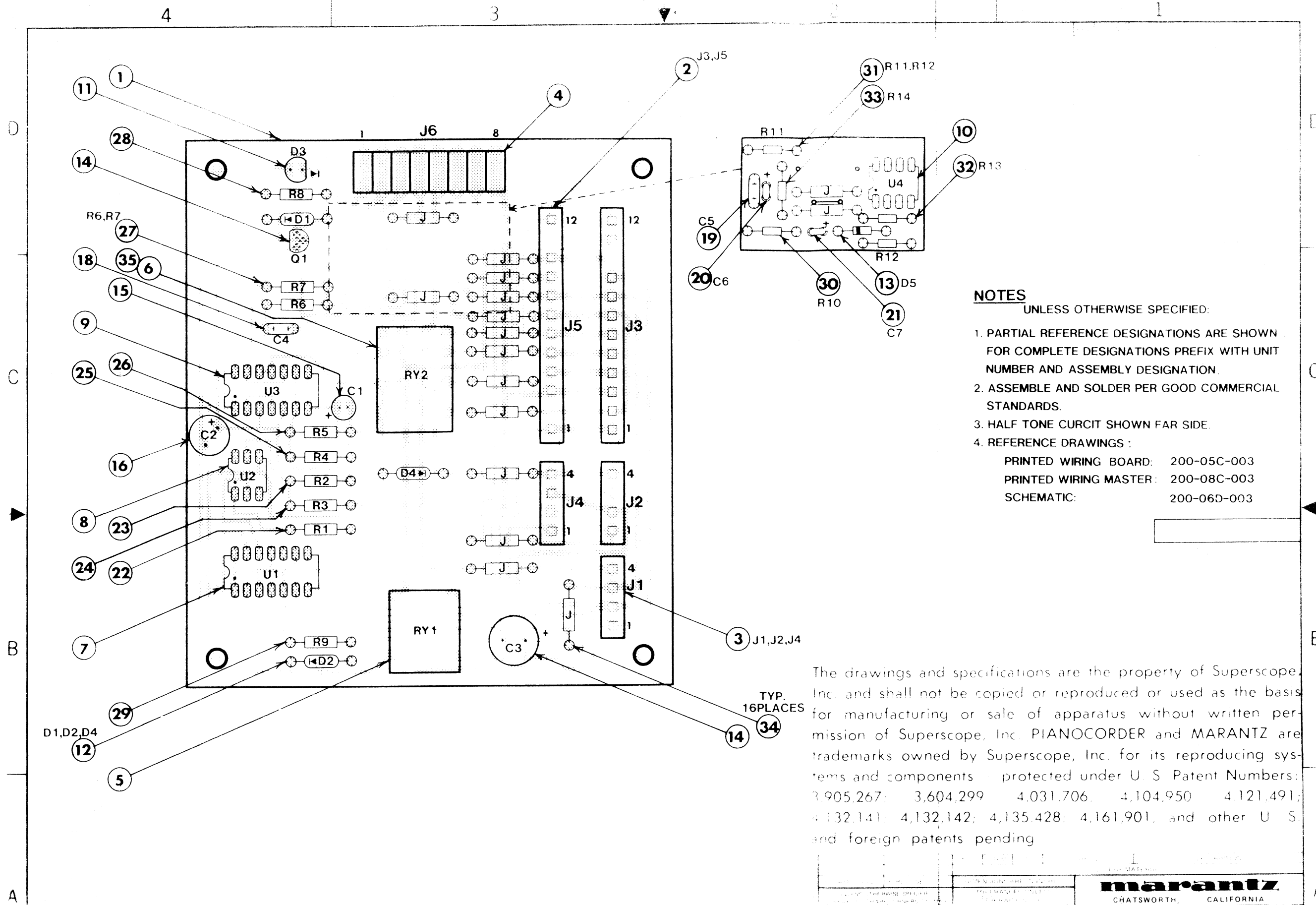
- NOTES**  
UNLESS OTHERWISE SPECIFIED:
- ALL RESISTORS IN OHMS, 1/4W, 5%
  - ALL CAPACITORS IN MFD
  - ALL DIODES IN4004
  - TEST POINT
  - REFERENCE DRAWINGS:  
PRINTED WIRING ASSY: 200-04D-004  
PRINTED WIRING BOARD: 200-05C-004  
SILKSCREEN MASTER: 200-07C-004  
PRINTED WIRING MASTER: 200-08C-004

The drawings and specifications are the property of Superscope, Inc. and shall not be copied or reproduced or used as the basis for manufacturing or sale of apparatus without written permission of Superscope, Inc. PIANOCORDER and MARANTZ are trademarks owned by Superscope, Inc. for its reproducing systems and components — protected under U. S. Patent Numbers: 3,905,267; 3,604,299; 4,031,706; 4,104,950; 4,121,491; 4,132,141; 4,132,142; 4,135,428; 4,161,901, and other U. S. and foreign patents pending.

REV.	E.C.N.	CHANGE
A		ADDED U1 PIN OUTS

DATE	BY	CHKD.	APPV.	SCALE	SH.	OF



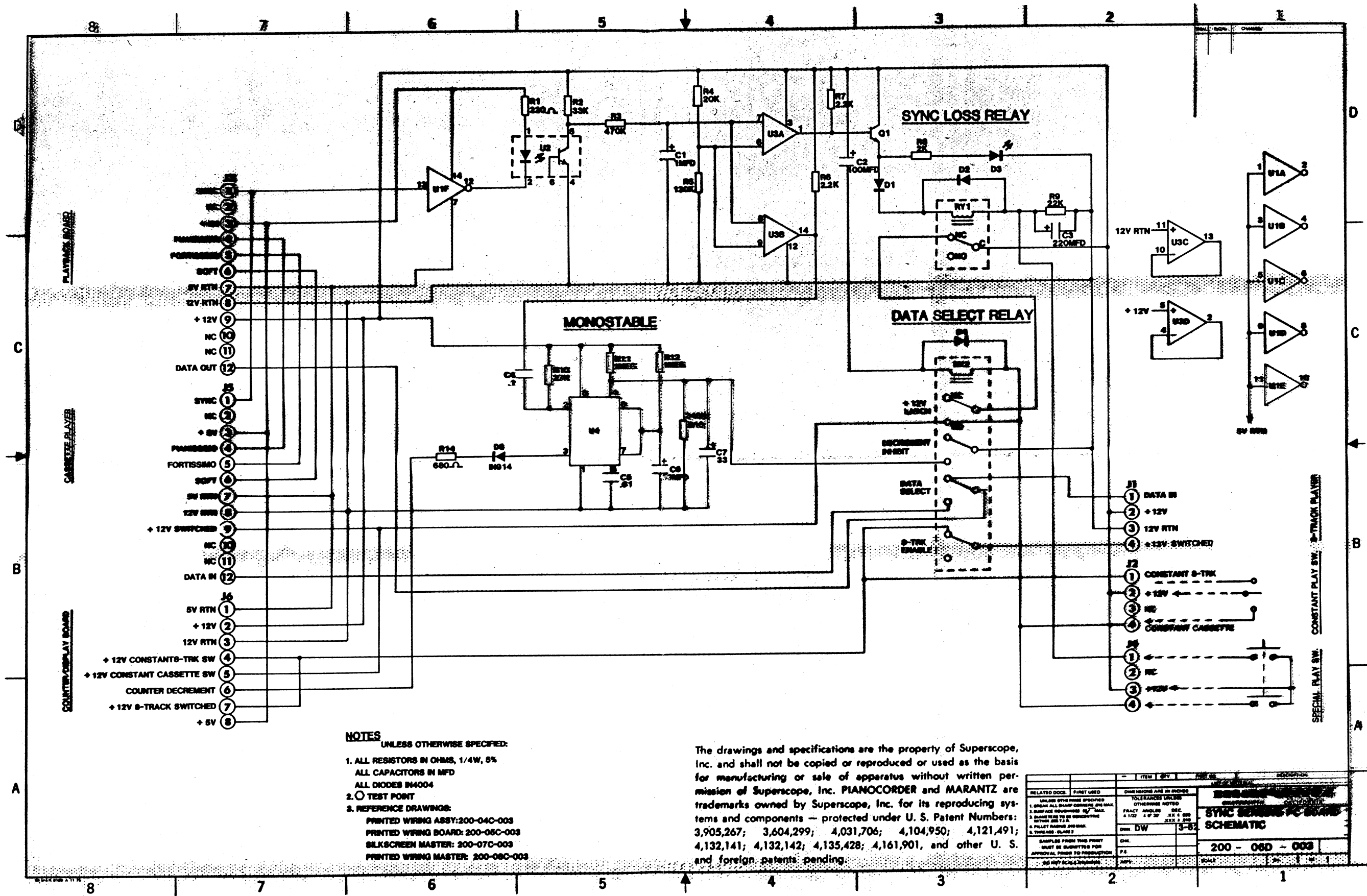
- NOTES**  
UNLESS OTHERWISE SPECIFIED:
1. PARTIAL REFERENCE DESIGNATIONS ARE SHOWN FOR COMPLETE DESIGNATIONS PREFIX WITH UNIT NUMBER AND ASSEMBLY DESIGNATION.
  2. ASSEMBLE AND SOLDER PER GOOD COMMERCIAL STANDARDS.
  3. HALF TONE CURCIT SHOWN FAR SIDE.
  4. REFERENCE DRAWINGS :  
 PRINTED WIRING BOARD: 200-05C-003  
 PRINTED WIRING MASTER: 200-08C-003  
 SCHEMATIC: 200-06D-003

The drawings and specifications are the property of Superscope, Inc. and shall not be copied or reproduced or used as the basis for manufacturing or sale of apparatus without written permission of Superscope, Inc. PIANOCORDER and MARANTZ are trademarks owned by Superscope, Inc. for its reproducing systems and components - protected under U. S. Patent Numbers: 3,905,267; 3,604,299; 4,031,706; 4,104,950; 4,121,491; 4,132,141; 4,132,142; 4,135,428; 4,161,901, and other U. S. and foreign patents pending

CHATSWORTH, CALIFORNIA	
<b>PRINTED WIRING ASSY SYNC SENSING BOARD</b>	
<b>200 04C 003</b>	

DW 3-82

VERSION 1

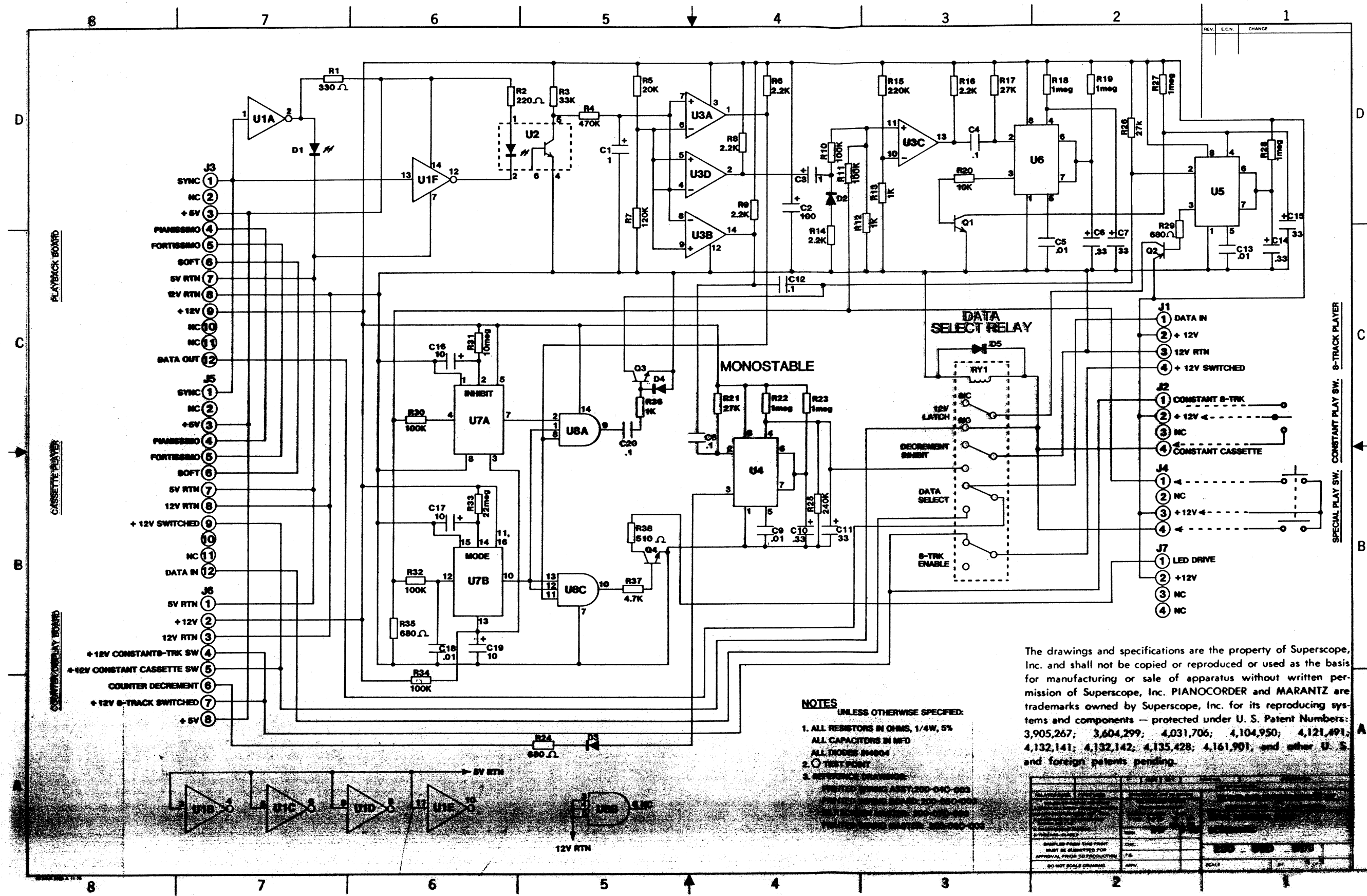


- NOTES**  
UNLESS OTHERWISE SPECIFIED:
- ALL RESISTORS IN OHMS, 1/4W, 5%  
ALL CAPACITORS IN MFD  
ALL DIODES IN4004
  - TEST POINT
  - REFERENCE DRAWINGS:  
PRINTED WIRING ASSY: 200-040-003  
PRINTED WIRING BOARD: 200-050-003  
SILKSCREEN MASTER: 200-070-003  
PRINTED WIRING MASTER: 200-080-003

The drawings and specifications are the property of Superscope, Inc. and shall not be copied or reproduced or used as the basis for manufacturing or sale of apparatus without written permission of Superscope, Inc. PIANOCORDER and MARANTZ are trademarks owned by Superscope, Inc. for its reproducing systems and components - protected under U. S. Patent Numbers: 3,905,267; 3,604,299; 4,031,706; 4,104,950; 4,121,491; 4,132,141; 4,132,142; 4,135,428; 4,161,901, and other U. S. and foreign patents pending.

RELATED DOC.	FIRST USED	DATE REVISION MADE IN INCHES	DESCRIPTION
UNLESS OTHERWISE SPECIFIED 1. BREAK ALL DIMENSIONS UNLESS OTHERWISE NOTED 2. SURFACE DIMENSIONS ONLY 3. DIMENSIONS TO BE OBTAINED BETWEEN SURFACES 4. HOLE DIMENSIONS TO BE OBTAINED BETWEEN SURFACES 5. DIMENSIONS FROM THIS POINT MUST BE QUANTIFIED FOR APPROVAL PRIOR TO PRODUCTION 6. DIMENSIONS TO BE OBTAINED BETWEEN SURFACES	FRAC. ANGLES DEC. 1/16 1/8 3/16 1/4 3/8 1/2 5/8 3/4 7/8 1 1 1/4 1 1/2 1 3/4 2 2 1/4 2 1/2 3 3 1/4 3 1/2 4 4 1/4 4 1/2 5 5 1/4 5 1/2 6 6 1/4 6 1/2 7 7 1/4 7 1/2 8 8 1/4 8 1/2 9 9 1/4 9 1/2 10 10 1/4 10 1/2 11 11 1/4 11 1/2 12 12 1/4 12 1/2 13 13 1/4 13 1/2 14 14 1/4 14 1/2 15 15 1/4 15 1/2 16 16 1/4 16 1/2 17 17 1/4 17 1/2 18 18 1/4 18 1/2 19 19 1/4 19 1/2 20 20 1/4 20 1/2 21 21 1/4 21 1/2 22 22 1/4 22 1/2 23 23 1/4 23 1/2 24 24 1/4 24 1/2 25 25 1/4 25 1/2 26 26 1/4 26 1/2 27 27 1/4 27 1/2 28 28 1/4 28 1/2 29 29 1/4 29 1/2 30 30 1/4 30 1/2 31 31 1/4 31 1/2 32 32 1/4 32 1/2 33 33 1/4 33 1/2 34 34 1/4 34 1/2 35 35 1/4 35 1/2 36 36 1/4 36 1/2 37 37 1/4 37 1/2 38 38 1/4 38 1/2 39 39 1/4 39 1/2 40 40 1/4 40 1/2 41 41 1/4 41 1/2 42 42 1/4 42 1/2 43 43 1/4 43 1/2 44 44 1/4 44 1/2 45 45 1/4 45 1/2 46 46 1/4 46 1/2 47 47 1/4 47 1/2 48 48 1/4 48 1/2 49 49 1/4 49 1/2 50 50 1/4 50 1/2 51 51 1/4 51 1/2 52 52 1/4 52 1/2 53 53 1/4 53 1/2 54 54 1/4 54 1/2 55 55 1/4 55 1/2 56 56 1/4 56 1/2 57 57 1/4 57 1/2 58 58 1/4 58 1/2 59 59 1/4 59 1/2 60 60 1/4 60 1/2 61 61 1/4 61 1/2 62 62 1/4 62 1/2 63 63 1/4 63 1/2 64 64 1/4 64 1/2 65 65 1/4 65 1/2 66 66 1/4 66 1/2 67 67 1/4 67 1/2 68 68 1/4 68 1/2 69 69 1/4 69 1/2 70 70 1/4 70 1/2 71 71 1/4 71 1/2 72 72 1/4 72 1/2 73 73 1/4 73 1/2 74 74 1/4 74 1/2 75 75 1/4 75 1/2 76 76 1/4 76 1/2 77 77 1/4 77 1/2 78 78 1/4 78 1/2 79 79 1/4 79 1/2 80 80 1/4 80 1/2 81 81 1/4 81 1/2 82 82 1/4 82 1/2 83 83 1/4 83 1/2 84 84 1/4 84 1/2 85 85 1/4 85 1/2 86 86 1/4 86 1/2 87 87 1/4 87 1/2 88 88 1/4 88 1/2 89 89 1/4 89 1/2 90 90 1/4 90 1/2 91 91 1/4 91 1/2 92 92 1/4 92 1/2 93 93 1/4 93 1/2 94 94 1/4 94 1/2 95 95 1/4 95 1/2 96 96 1/4 96 1/2 97 97 1/4 97 1/2 98 98 1/4 98 1/2 99 99 1/4 99 1/2 100 100 1/4 100 1/2	SYNCHRONIZER PC BOARD SCHEMATIC	
200-060-003			

VERSION 2



**NOTES**  
 UNLESS OTHERWISE SPECIFIED:  
 1. ALL RESISTORS IN OHMS, 1/4W, 5%  
 ALL CAPACITORS IN MFD  
 ALL DIODES IN4004  
 2. ○ TEST POINT  
 3. REFERENCE DRAWING:  
 PRINTED CIRCUIT BOARD 200-040-000  
 PRINTED CIRCUIT BOARD 200-050-000  
 PRINTED CIRCUIT BOARD 200-060-000  
 PRINTED CIRCUIT BOARD 200-080-000

The drawings and specifications are the property of Superscope, Inc. and shall not be copied or reproduced or used as the basis for manufacturing or sale of apparatus without written permission of Superscope, Inc. PIANOCORDER and MARANTZ are trademarks owned by Superscope, Inc. for its reproducing systems and components — protected under U. S. Patent Numbers: 3,905,267; 3,604,299; 4,031,706; 4,104,950; 4,121,491; 4,132,141; 4,132,142; 4,135,428; 4,161,901, and other U. S. and foreign patents pending.

REVISION HISTORY	
REV	CHANGE

APPROVALS		
DESIGNER	CHECKED	DATE
SAMPLES FROM THIS PRINT MUST BE RETAINED FOR APPROVAL PRIOR TO PRODUCTION		
APPV	DATE	

4

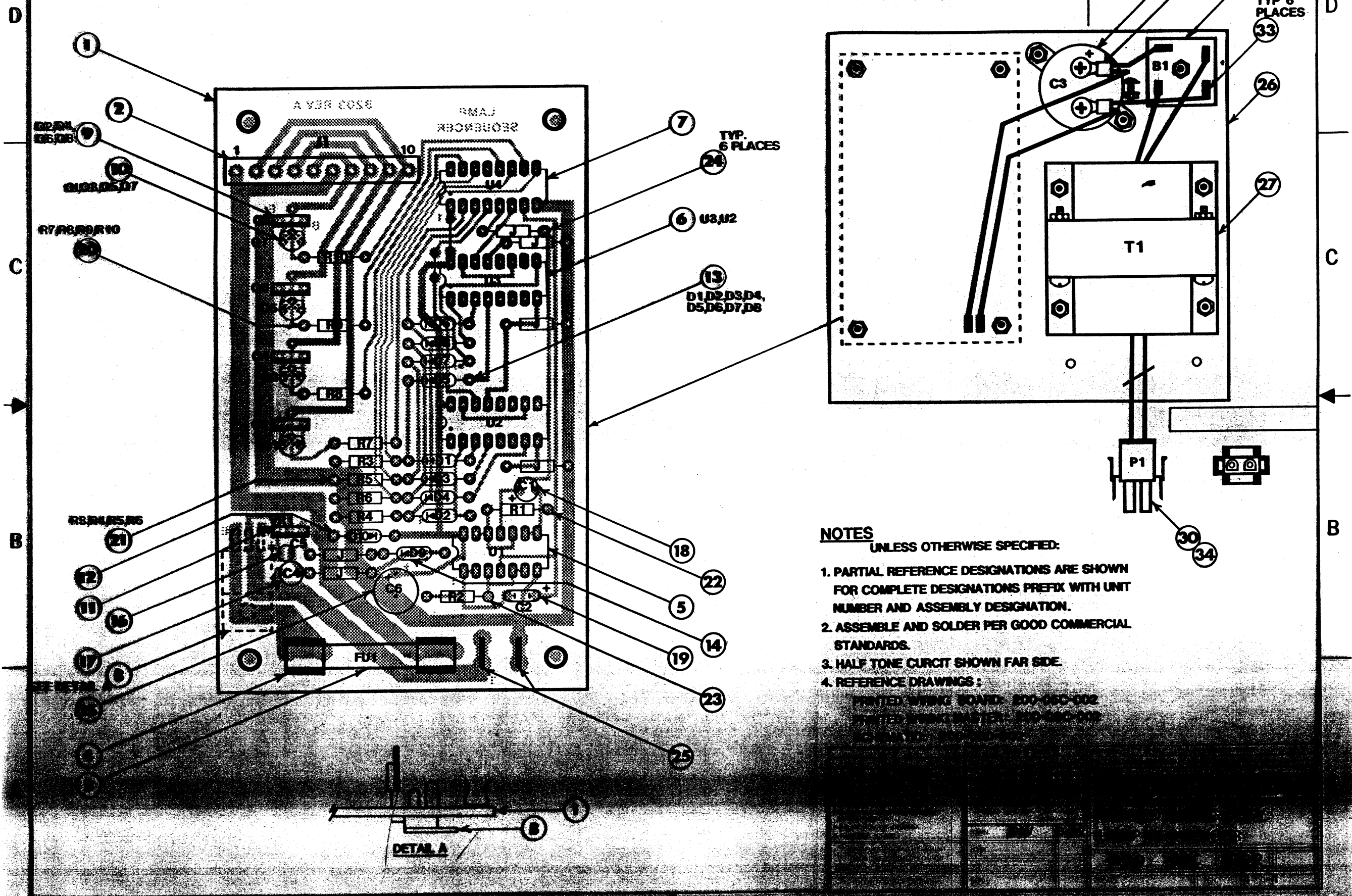
3

2

1

The drawings and specifications are the property of Superscope, Inc. and shall not be copied or reproduced or used as the basis for manufacturing or sale of apparatus without written permission of Superscope, Inc. PIANOCORDER and MARANTZ are trademarks owned by Superscope, Inc. for its reproducing systems and components — protected under U. S. Patent Numbers: 3,905,267; 3,604,299; 4,031,706; 4,104,950; 4,121,491; 4,132,141; 4,132,142; 4,135,428; 4,161,901, and other U. S. and foreign patents pending.

REV.	E.C.N.	CHANGE



**NOTES**

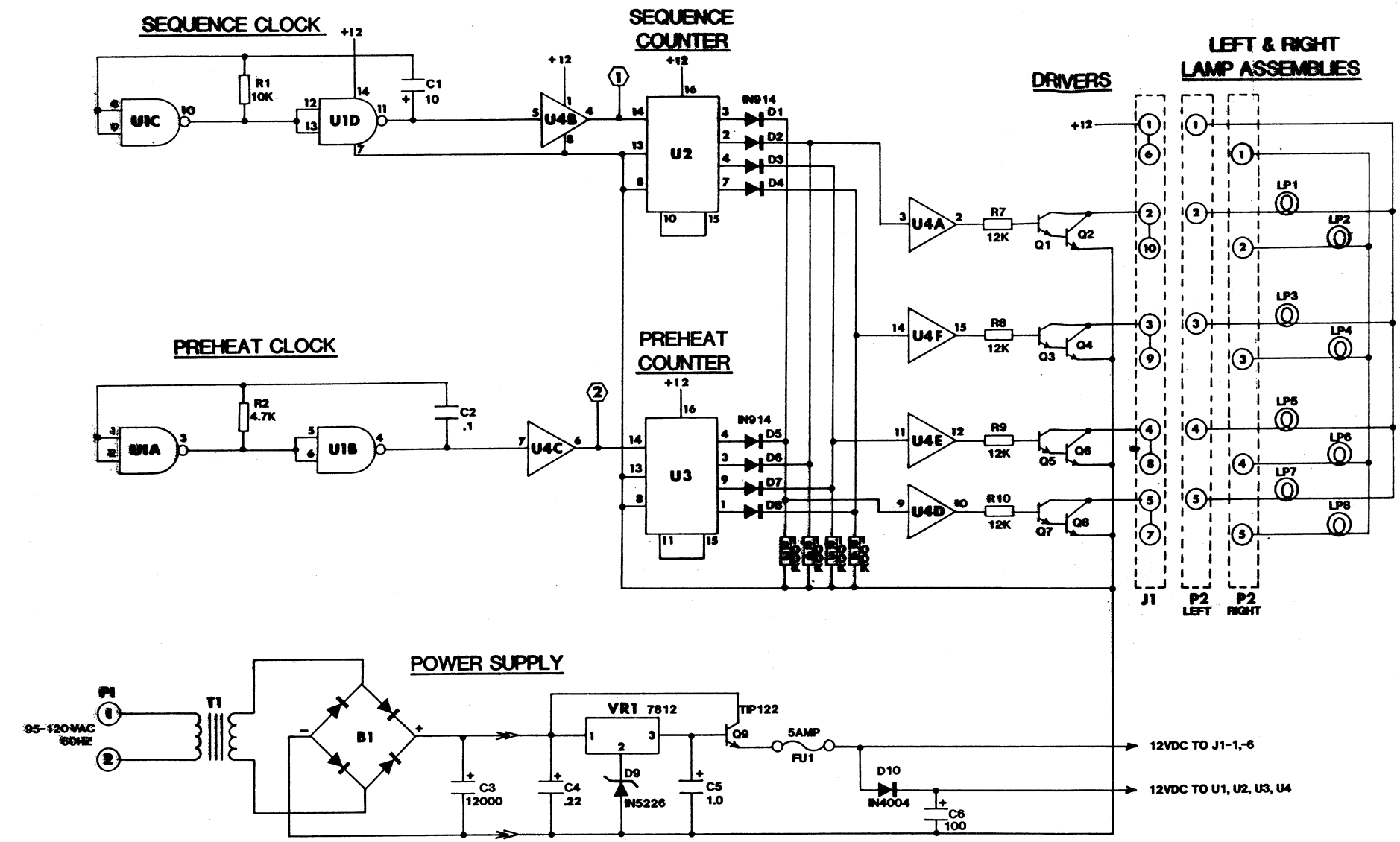
UNLESS OTHERWISE SPECIFIED:

1. PARTIAL REFERENCE DESIGNATIONS ARE SHOWN FOR COMPLETE DESIGNATIONS PREFIX WITH UNIT NUMBER AND ASSEMBLY DESIGNATION.
2. ASSEMBLE AND SOLDER PER GOOD COMMERCIAL STANDARDS.
3. HALF TONE CURCIT SHOWN FAR SIDE.
4. REFERENCE DRAWINGS :

PRINTED WIRING BOARD: 200-050-002  
 PRINTED WIRING MASTER: 200-050-002  
 SCHEMATIC: 200-050-002

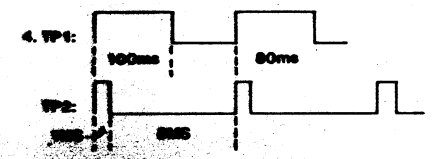
8 7 6 5 4 3 2 1

REV	E.C.N.	CHANGE



**NOTES**

- 1. ○ TEST POINTS
- 2. ALL CAPACITORS IN MFD
- 3. ALL RESISTORS IN OHMS

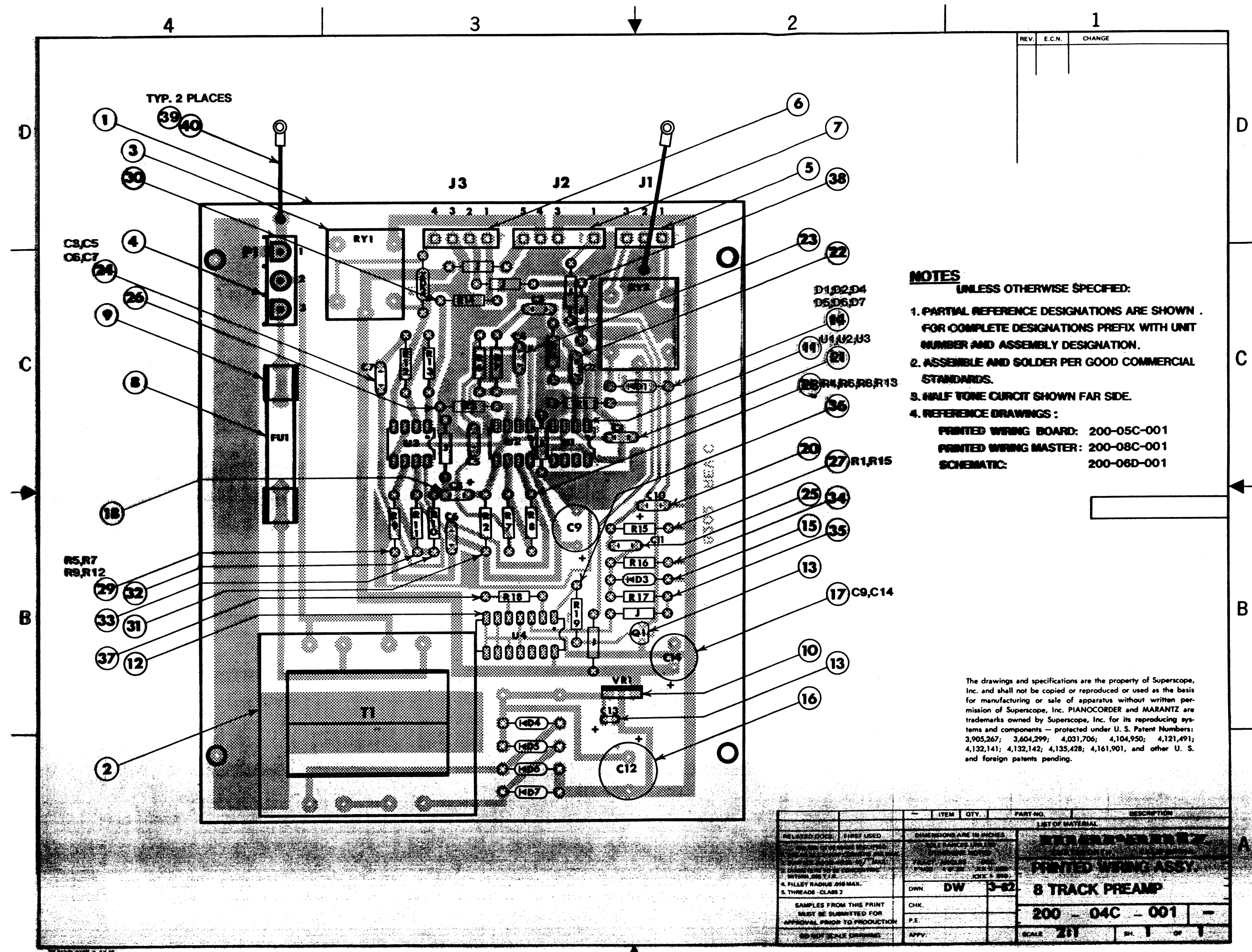


4. ORDER OF SEQUENCE J1-5, 2, 4, 3

The drawings and specifications are the property of Superscope, Inc. and shall not be copied or reproduced or used as the basis for manufacturing or sale of apparatus without written permission of Superscope, Inc. PIANOCORDER and MARANTZ are trademarks owned by Superscope, Inc. for its reproducing systems and components — protected under U. S. Patent Numbers: 3,905,267; 3,604,299; 4,031,706; 4,104,950; 4,121,491; 4,132,141; 4,132,142; 4,135,428; 4,161,901, and other U. S. and foreign patents pending.

8 7 6 5 4 3 2 1





REV.	E.C.N.	CHANGE

- NOTES**  
UNLESS OTHERWISE SPECIFIED:
- PARTIAL REFERENCE DESIGNATIONS ARE SHOWN. FOR COMPLETE DESIGNATIONS PREFIX WITH UNIT NUMBER AND ASSEMBLY DESIGNATION.
  - ASSEMBLE AND SOLDER PER GOOD COMMERCIAL STANDARDS.
  - HALF TONE CURCIT SHOWN FAR SIDE.
  - REFERENCE DRAWINGS :  
 PRINTED WIRING BOARD: 200-05C-001  
 PRINTED WIRING MASTER: 200-08C-001  
 SCHEMATIC: 200-08D-001

The drawings and specifications are the property of Superscope, Inc. and shall not be copied or reproduced or used as the basis for manufacturing or sale of apparatus without written permission of Superscope, Inc. PIANOCORDER and MARANTZ are trademarks owned by Superscope, Inc. for its reproducing systems and components - protected under U. S. Patent Numbers: 3,905,267; 3,604,299; 4,031,706; 4,104,950; 4,121,491; 4,132,141; 4,132,142; 4,135,428; 4,161,901, and other U. S. and foreign patents pending.

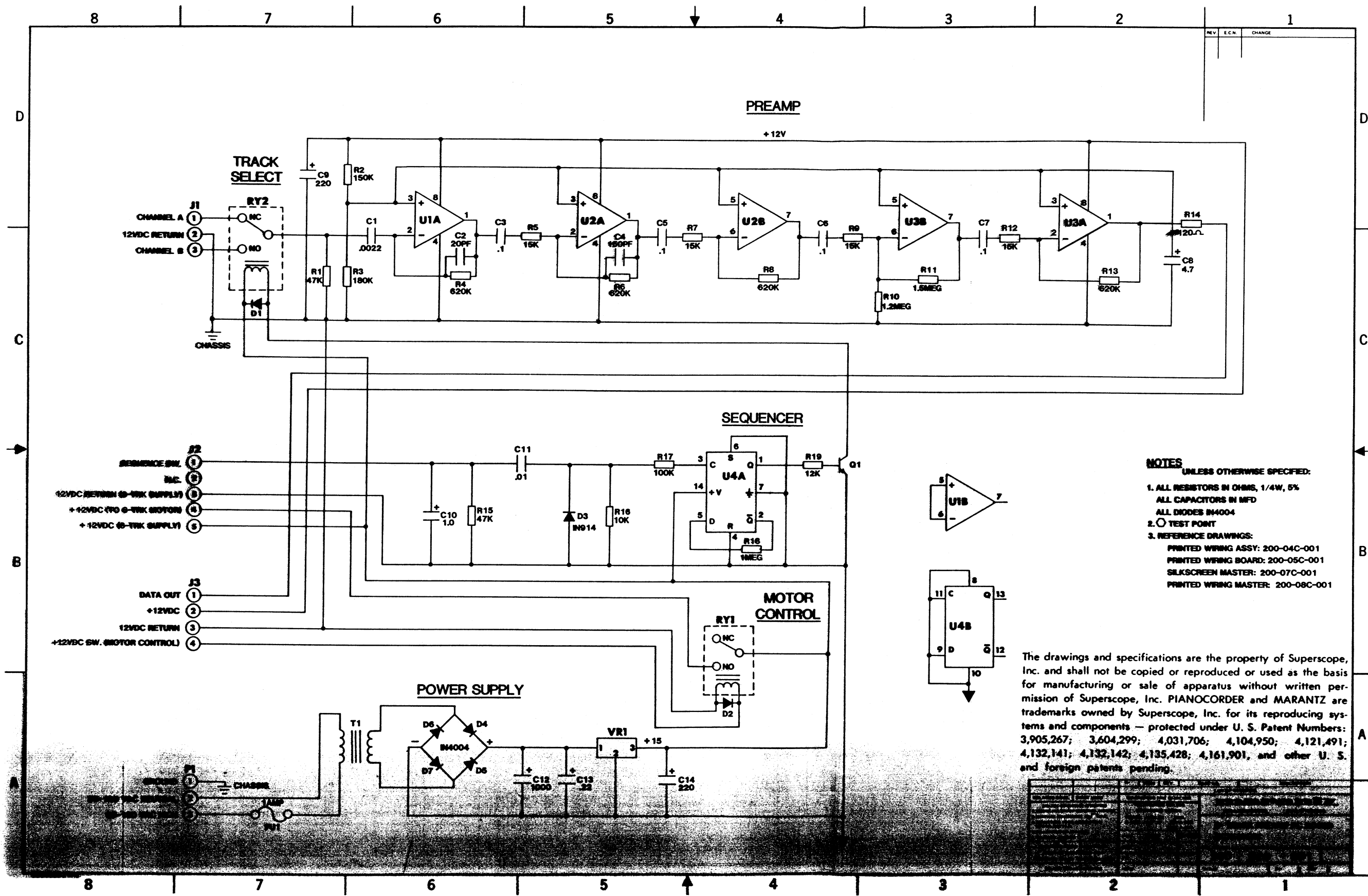
REV.	ITEM	QTY.	PART NO.	DESCRIPTION
LIST OF MATERIAL				
<b>PRINTED WIRING ASSY.</b>				
<b>8 TRACK PREAMP</b>				
200 - 04C - 001				-
SCALE 2:1				SH. 1 OF 1

RELATED DOCS: FIRST USED  
 DIMENSIONS ARE IN INCHES  
 UNLESS OTHERWISE SPECIFIED  
 1. DIMENSIONS UNLESS OTHERWISE SPECIFIED  
 2. DIMENSIONS TO BE CONSIDERED WITHIN .005 T.I.R.  
 3. DIMENSIONS TO BE CONSIDERED WITHIN .005 T.I.R.  
 4. FILLET RADIUS .018 MAX.  
 5. THREADS - CLASS 2

SAMPLES FROM THIS PRINT MUST BE SUBMITTED FOR APPROVAL PRIOR TO PRODUCTION

DWN DW 3-62  
 CHK.  
 P.E.  
 APPV.

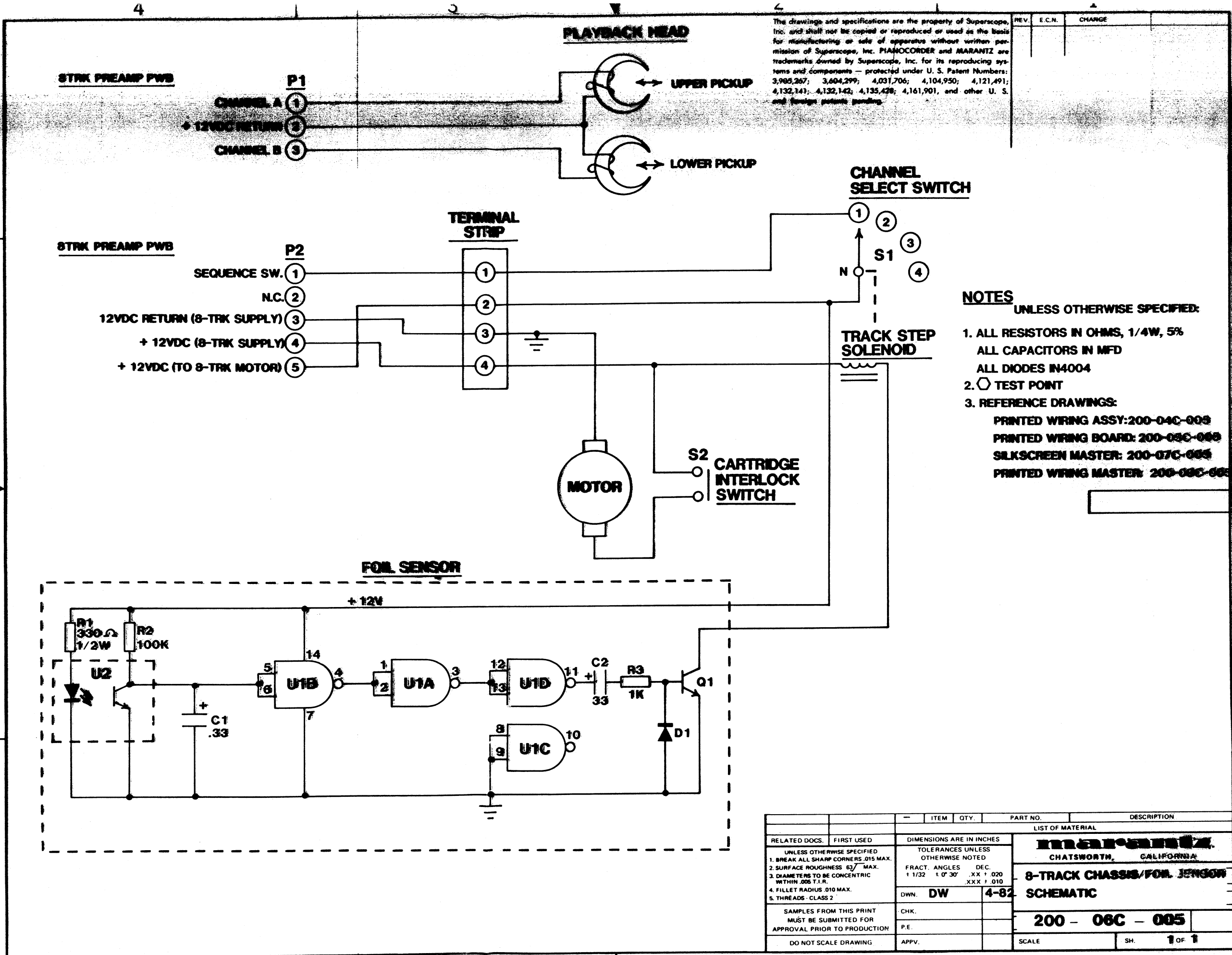
REV	E.C.N.	CHANGE



- NOTES**  
UNLESS OTHERWISE SPECIFIED:
1. ALL RESISTORS IN OHMS, 1/4W, 5%
  2. ALL CAPACITORS IN MFD
  3. ALL DIODES IN4004
  4. ○ TEST POINT
  5. REFERENCE DRAWINGS:  
PRINTED WIRING ASSY: 200-04C-001  
PRINTED WIRING BOARD: 200-05C-001  
SILKSCREEN MASTER: 200-07C-001  
PRINTED WIRING MASTER: 200-08C-001

The drawings and specifications are the property of Superscope, Inc. and shall not be copied or reproduced or used as the basis for manufacturing or sale of apparatus without written permission of Superscope, Inc. PIANOCORDER and MARANTZ are trademarks owned by Superscope, Inc. for its reproducing systems and components — protected under U. S. Patent Numbers: 3,905,267; 3,604,299; 4,031,706; 4,104,950; 4,121,491; 4,132,141; 4,132,142; 4,135,428; 4,161,901, and other U. S. and foreign patents pending.

REV	E.C.N.	CHANGE



The drawings and specifications are the property of Superscope, Inc. and shall not be copied or reproduced or used as the basis for manufacturing or sale of apparatus without written permission of Superscope, Inc. PIANOCORDER and MARANTZ are trademarks owned by Superscope, Inc. for its reproducing systems and components - protected under U. S. Patent Numbers: 3,985,267; 3,604,299; 4,031,706; 4,104,950; 4,121,491; 4,132,141; 4,132,142; 4,135,428; 4,161,901, and other U. S. and foreign patents pending.

REV.	E.C.N.	CHANGE

- NOTES**  
UNLESS OTHERWISE SPECIFIED:
- ALL RESISTORS IN OHMS, 1/4W, 5%  
ALL CAPACITORS IN MFD  
ALL DIODES IN4004
  - TEST POINT
  - REFERENCE DRAWINGS:  
PRINTED WIRING ASSY: 200-04C-009  
PRINTED WIRING BOARD: 200-03C-009  
SILKSCREEN MASTER: 200-07C-005  
PRINTED WIRING MASTER: 200-08C-005

RELATED DOCS.	FIRST USED	DIMENSIONS ARE IN INCHES	LIST OF MATERIAL
UNLESS OTHERWISE SPECIFIED 1. BREAK ALL SHARP CORNERS .015 MAX. 2. SURFACE ROUGHNESS 63/ MAX. 3. DIAMETERS TO BE CONCENTRIC WITHIN .005 T.I.R. 4. FILLET RADIUS .010 MAX. 5. THREADS - CLASS 2		TOLERANCES UNLESS OTHERWISE NOTED FRACT. ANGLES DEC. 1/32 1/8 30° .XX ± .020 .XXX ± .010	<b>8-TRACK CHASSIS/FOIL SENSOR SCHEMATIC</b>
SAMPLES FROM THIS PRINT MUST BE SUBMITTED FOR APPROVAL PRIOR TO PRODUCTION	CHK.		<b>200 - 06C - 005</b>
DO NOT SCALE DRAWING	APPV.		SCALE SH. 1 OF 1